



Willow Cottage Longstone Lane

, Ashford in the Water, DE45 1NH

£980,000



Willow Cottage Longstone

, Ashford in the Water, DE45 1NH

An impressive 4 bedroom detached residence, situated on the sought after location of Longstone Lane, within the Peak District village of Ashford in the Water. Willow Cottage occupies a plot measuring approximately 0.5 acres with beautifully landscaped gardens surrounded by open fields. This impressive family home benefits from ample off street parking and a double garage. Boasting natural light, the property offers 1593 sqft of accommodation over 2 storeys.

The ground floor comprises; Entrance porch and hallway, open plan living space featuring patio doors onto the front garden, kitchen area with integrated appliances and access onto the rear. Separate utility room and downstairs WC, dual aspect snug with log burning stove.

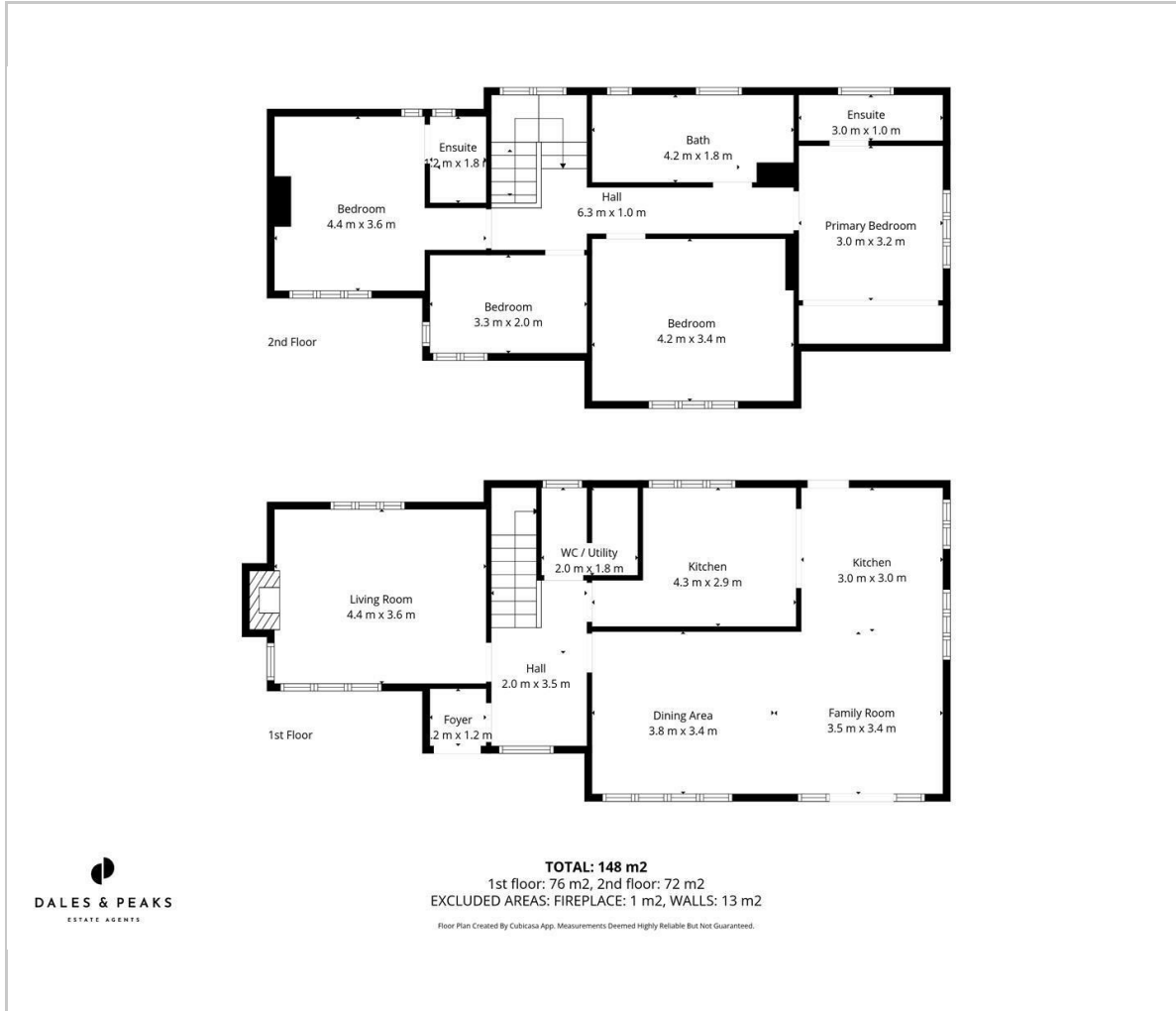
The first floor comprises; Primary bedroom with ensuite shower room and built in wardrobe space, second double bedroom with ensuite shower room, third double bedroom, main bathroom and single bedroom.

**Dales and Peaks ForwardMove
- Please read**





Floor Plan



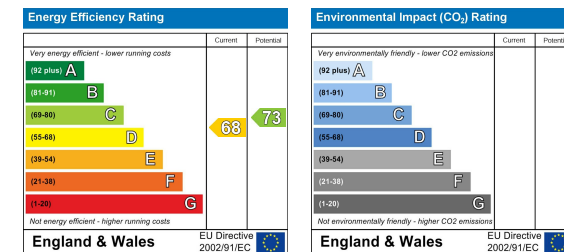
Area Map



Viewing

Please contact our Chesterfield Office on 01246 567540 if you wish to arrange a viewing appointment for this property or require further information.

Energy Efficiency Graph



These particulars, whilst believed to be accurate are set out as a general outline only for guidance and do not constitute any part of an offer or contract. Intending purchasers should not rely on them as statements of representation of fact, but must satisfy themselves by inspection or otherwise as to their accuracy. No person in this firm's employment has the authority to make or give any representation or warranty in respect of the property.



131 Chatsworth Road, Chesterfield, Derbyshire, S40 2AP
 T: 01246 567540

E: info@dalesandpeaks.co.uk
 www.dalesandpeaks.co.uk